

VAISALA Xweather

# DRIVING THE CHANGE THE FUTURE OF ROADS IS NOW

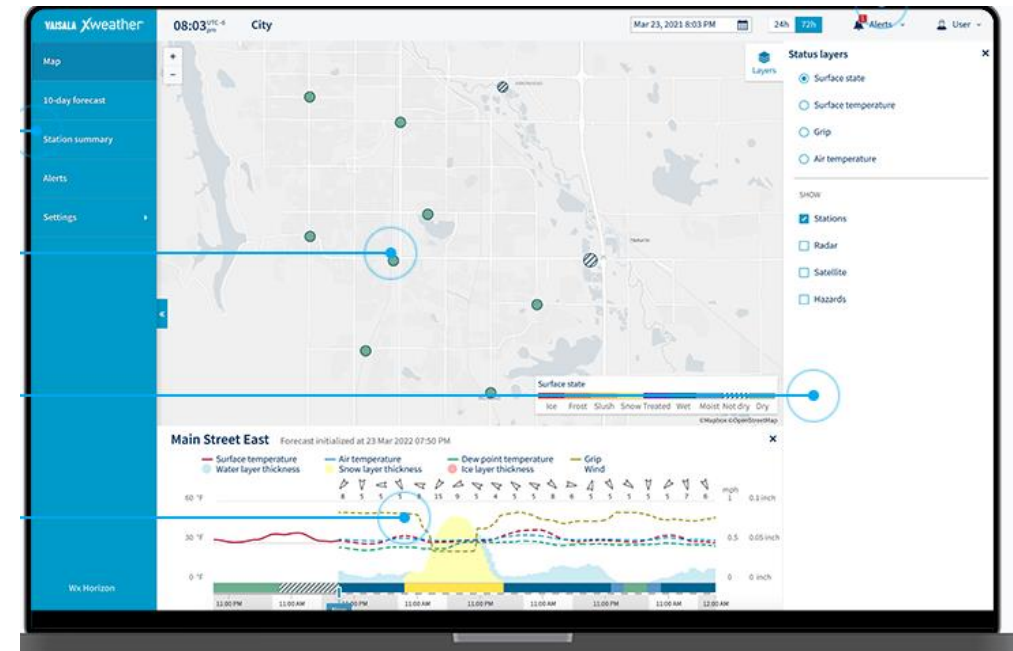
---

Oslo 18.3.2024



# RoadAI

Automatisk kartläggning av vägsador och trafikskyltar



# WxHorizon

Automatisk insamling av data för effektivt vägvinterunderhåll

# Varför?

---

**Färre körda kilometer**

**Förhindra onödiga utkörningar och saltsvinn**

**Enkel automatiserad dokumentation av arbete och delning av resultat**

# VAISALA

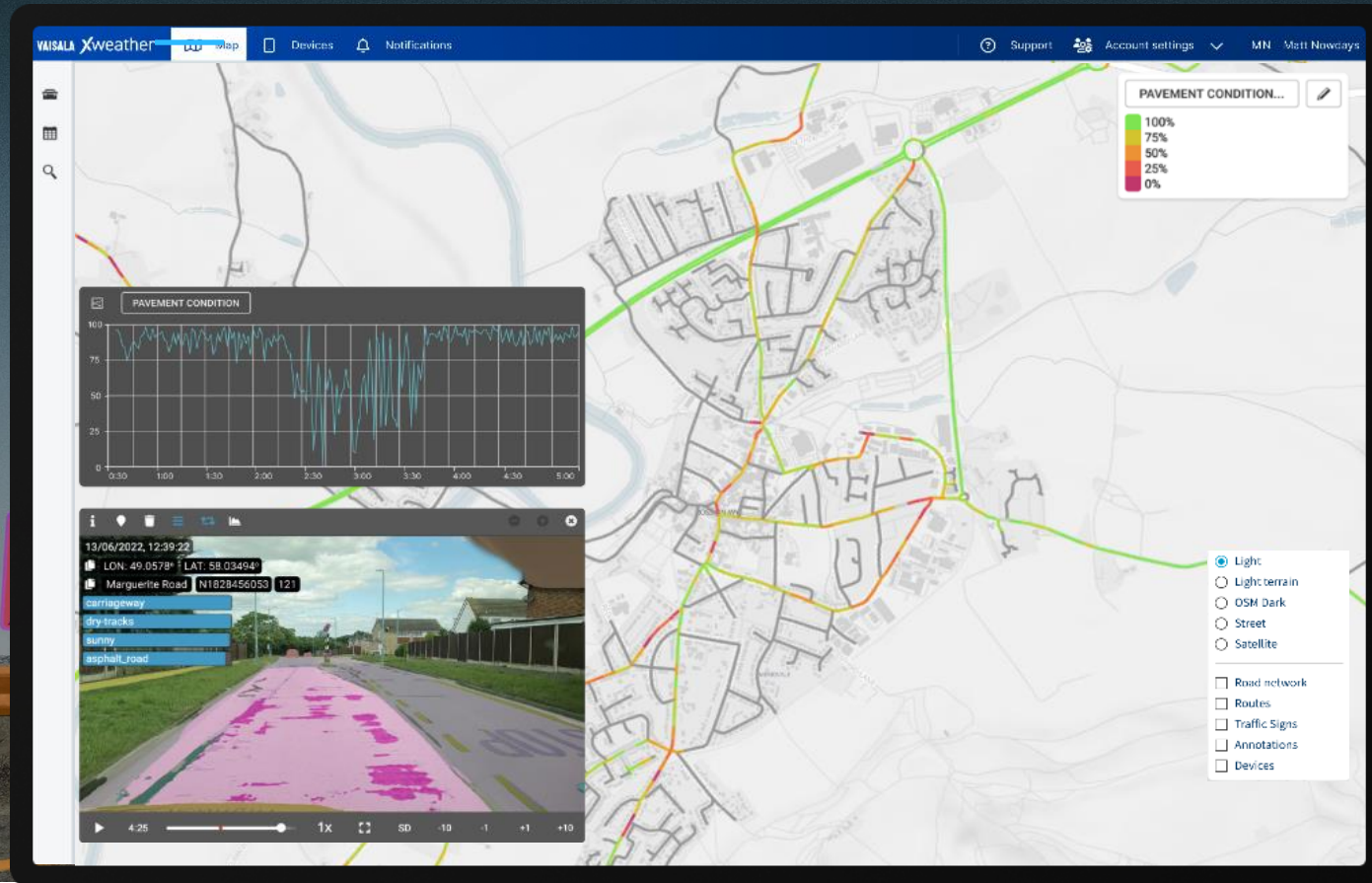


ROAD MAINTENANCE —

# Automating Road Surveys



# RoadAI



## One drive, multiple surveys

Anyone with a driver's license can survey your road defects, and road fixes, as well as create comprehensive asset inventories all at once.



## Automatic analysis

Deliver all the results for you within hours instead of weeks.



## Re-play

You are backed by HD videos of your road network when you want to go back in time.



## All data visualized

Your road conditions and assets are visualized on a map with powerful filtering capabilities so you can easily find what you are looking for.

WEATHER

AIR TEMPERATURE -1.11°C  
RELATIVE HUMIDITY 87.2%  
FOG  
VISIBILITY 0.754 mi  
PROBABILITY OF PRECIPITATION 24%



WEATHER HAZARD WARNING  
**LOW TEMP**

ICY CONDITIONS?

ROAD WEATHER

AIR TEMPERATURE -1.11°C  
RELATIVE HUMIDITY 87.2%  
FOG  
VISIBILITY 0.754 mi  
PROBABILITY OF PRECIPITATION 24%

WET SURFACE  
SURFACE TEMP 3.3°C

WET SURFACE  
LAYER THICKNESS 0.13 in  
SURFACE TEMP 1.6°C



RISK OF AQUAPLANING  
WET SURFACE  
LAYER THICKNESS 0.28 in



# Wx Horizon

App that uses sensors to generate enhanced road weather forecasts for winter maintenance professionals



### Know before you go

Get all the information you need on your local road conditions with one glance



### Stay informed

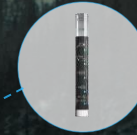
Alerts and notifications keep you up to date on changing weather conditions



### Plan ahead

You and your crew have more time to prepare and make informed proactive treatment decisions

Embedded sensor



Non-invasive sensor



### Features:

- Wireless
- 3+ year battery life
- Reference grade accuracy

### Measurements:

- Surface temperature
- Residual salt
- Air temperature
- Dew point temperature
- Road state: dry / not dry

Radar and satellite layers

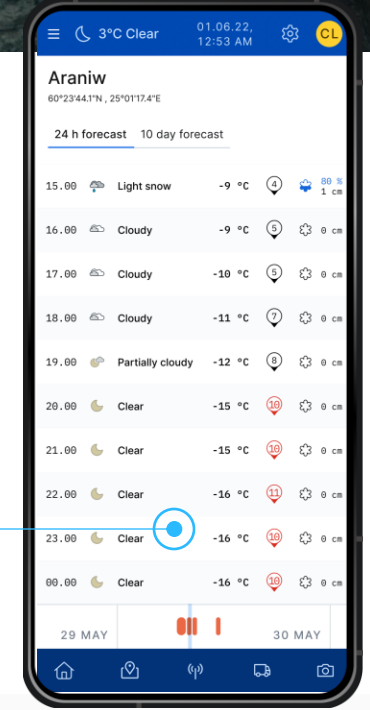
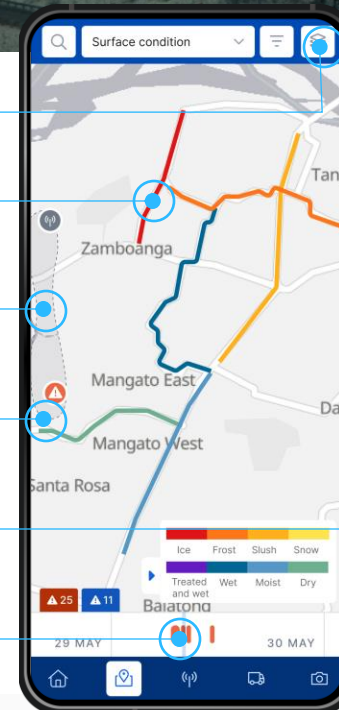
Heatmaps for surface temperature, surface state and grip

Alerts and notifications

**NEW** Connected car data: tire grip, windscreen wipers, air temperature

General weather forecast

72-hour road weather forecasts

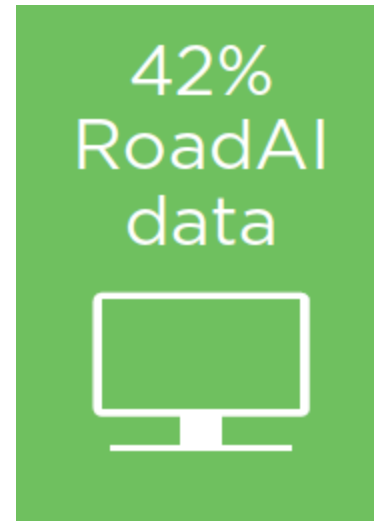


# Minskade utsläpp

---

Minska koldioxidutsläppen med ~42% för underhållsaktiviteter.

Bruk av RoadAI minskar eller/och eliminerar behovet av upprepade körningar.



**TACK!**

